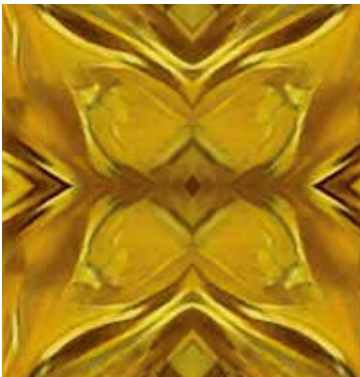
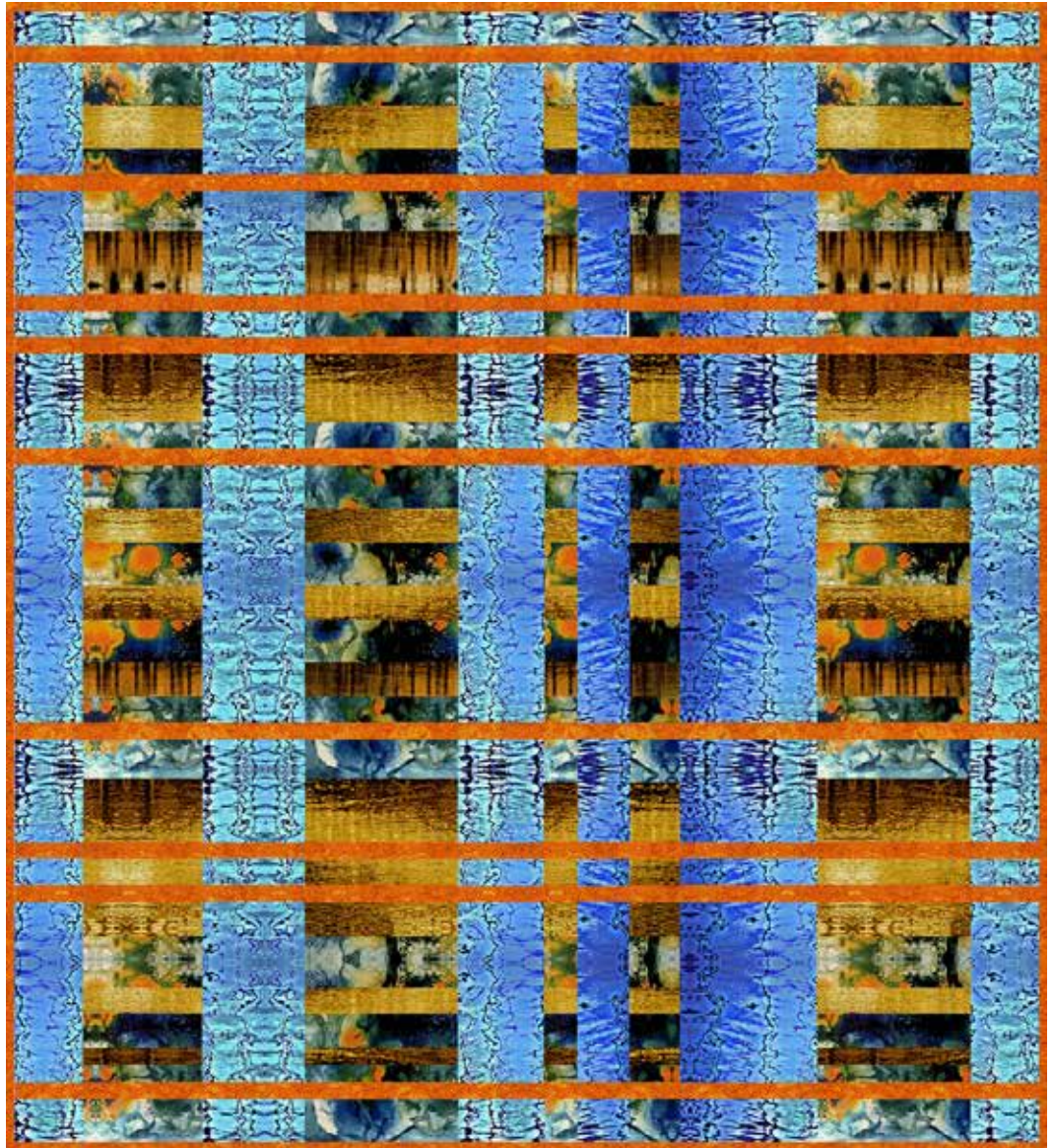


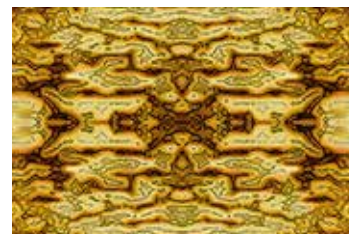
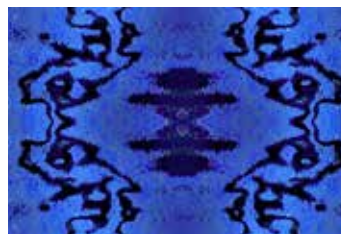
Golden Hour

BY SAQA



Golden Woodland Quilt
designed by: **Luana Rubin**
Quilt Size: 60" x 66"
andoverfabrics.com

SAQA™
Studio Art Quilt Associates
Celebrating 25 years



andover



makower uk
The Henley Studio

Free Pattern Download Available

1384 Broadway New York, NY 10018
Tel. (800) 223-5678 • andoverfabrics.com

Golden Woodland Quilt



Introducing Andover Fabrics new collection:

GOLDEN HOUR by SAQA (Studio Art Quilt Associates)

Quilt designed by Luana Rubin

Quilt finishes 60" x 66"

Although the quilt is made with just four fabrics, the prints offer a variety of looks when the patches are cut. The image is of a deep wood reflected in pools of water, with rays of sun shining through. The piecing is simple enough for any beginner, and the result is a contemporary quilt that is sure to intrigue any viewer.

Cutting Directions

Note: Read assembly directions before cutting patches. All measurements are cut sizes and include 1/4" seam allowances. WOF designates the width of fabric from selvedge to selvedge (approximately 42" wide).

Fabric A

Cut (7) strips 2½" x WOF for binding
Cut (14) strips 1½" x WOF, pieced to make (9) sashes 1½" x 60½"

Fabric B

Cut (2) strips 8½" x WOF (read Step 1)
Cut (2) strips 6½" x WOF
Cut (2) strips 5½" x WOF
Cut (4) strips 4½" x WOF
Cut (2) strips 3½" x WOF

Fabric C

Cut (2) strips 9½" x WOF
Cut (1) strip 7½" x WOF
Cut (1) strip 3½" x WOF
Cut (1) strip 2½" x WOF

Fabric D

Cut (2) strips 9½" x WOF
Cut (1) strip 7½" x WOF
Cut (1) strip 3½" x WOF
Cut (1) strip 2½" x WOF

Backing

Cut (2) panels 37" x 68", pieced to fit quilt top with overlap on all sides

Fabric Requirements

		Yardage	Fabric
Fabric A	sash, binding	1½ yards	116-O
Fabric B	setting	2½ yards	120-B
Fabric C	setting	1 yard	121-YO
Fabric D	setting	1 yard	123-OB
Backing		4 yards	118-BY

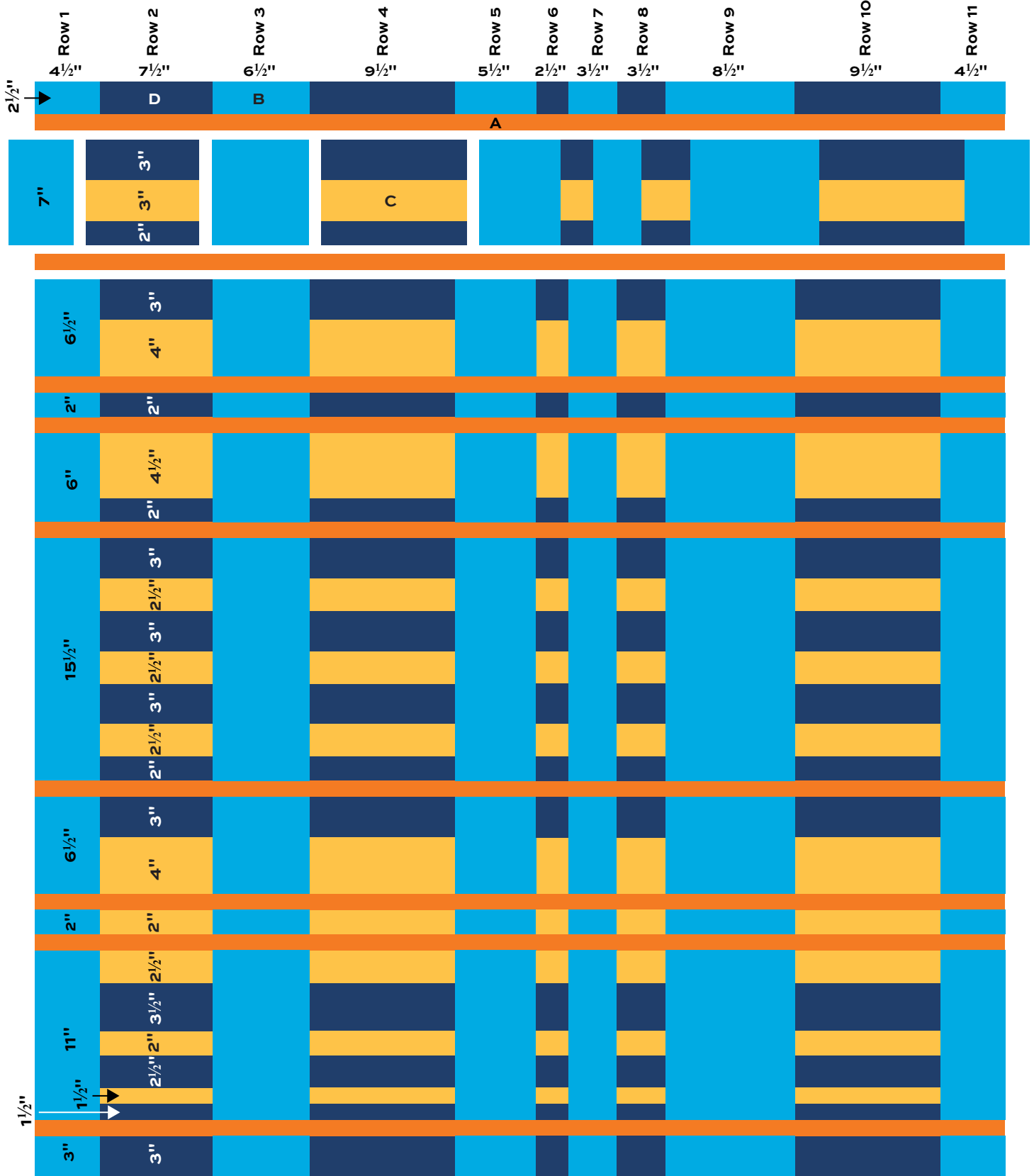
Making the Quilt

1. Examine the Quilt Diagram, noting that the measurements at the top of each vertical row refer to the WOF strips needed for each column. The measurements listed in individual patches in rows 1 and 2 refer to the size of the patches that you need to cut from the WOF strips. For instance, the Fabric B patch in the top left is a rectangle that is 2½" x 4½", cut from a Fabric B 4½" WOF strip. The first Fabric D patch in the top horizontal row is a 2½" x 7½" rectangle cut from the 7½" WOF strip. To make it less confusing, pin a sticky note to each WOF strip with the measurement as soon as you cut a strip. Note that rows 4 and 10 are made with the same patches, and rows 1 and 11 are the same.
2. Referring to the Quilt Diagram, cut the 6 Fabric B and 5 Fabric D rectangles needed for the top horizontal row. Join the patches to make a horizontal row in the order shown. Stitch a Fabric A sash to the bottom of the row. Set aside on a flat surface or design board.
3. Cut the Fabric C and Fabric D rectangles for the next pieced horizontal row. Join the C and D patches to make the necessary pieced units. Sew these units between the appropriate Fabric B rectangles to make the second horizontal row. Sew a Fabric A sash to the bottom. Join the parts from Steps 2 and 3 together.
4. Repeat these steps to complete the 10 horizontal rows, adding a sash to the bottom of each row, except for the bottom row. Join all the rows.

Finishing the Quilt

5. Layer the quilt with batting and backing and baste. Quilt in the ditch around sashes and patches. Quilt around the printed motifs as you wish. Bind to finish the quilt.

Golden Woodland Quilt



Quilt Diagram

Golden Hour

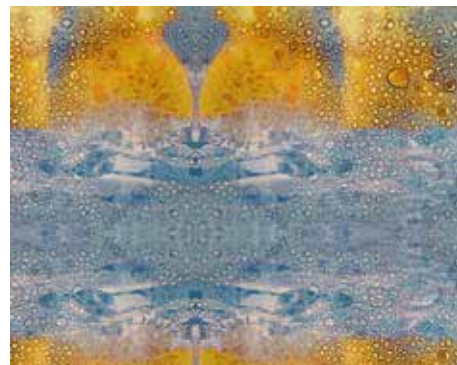
BY SAQA (Studio Art Quilt Associates)



116-O*



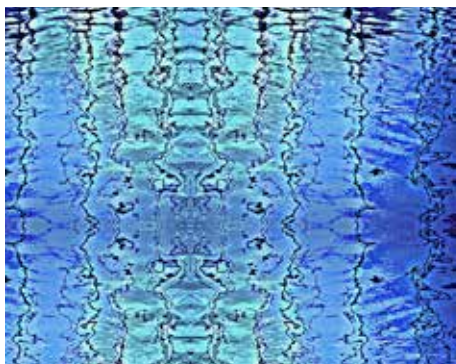
117-R



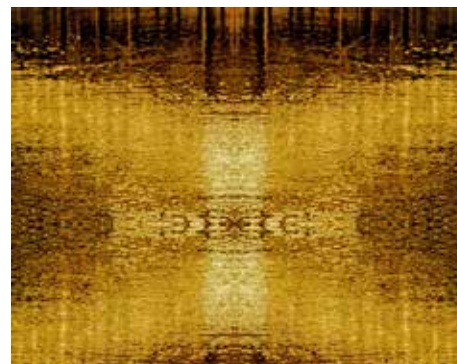
118-BY*



119-CO



120-B*



121-YO*



122-YG



123-OB*



124-P



1867-MC



1867-ML



1867-N22

*Indicates fabrics used
in quilt pattern.

Fabrics shown are
10% of actual size.

andover

•
•
•
•
makower uk
The Henley Studio

Free Pattern Download Available

1384 Broadway New York, NY 10018
Tel. (800) 223-5678 • andoverfabrics.com

7/15/17